

Oracle® Banking Platform Collections and Recovery

Customization Guide

Release 2.9.0.0.0

F23392-01

November 2019

Oracle Banking Platform Collections and Recovery Customization Guide, Release 2.9.0.0.0

F23392-01

Copyright © 2011, 2019, Oracle and/or its affiliates. All rights reserved.

This software and related documentation are provided under a license agreement containing restrictions on use and disclosure and are protected by intellectual property laws. Except as expressly permitted in your license agreement or allowed by law, you may not use, copy, reproduce, translate, broadcast, modify, license, transmit, distribute, exhibit, perform, publish or display any part, in any form, or by any means. Reverse engineering, disassembly, or decompilation of this software, unless required by law for interoperability, is prohibited.

The information contained herein is subject to change without notice and is not warranted to be error-free. If you find any errors, please report them to us in writing.

U.S. GOVERNMENT END USERS: Oracle programs, including any operating system, integrated software, any programs installed on the hardware, and/or documentation, delivered to U.S. Government end users are "commercial computer software" pursuant to the applicable Federal Acquisition Regulation and agency-specific supplemental regulations. As such, use, duplication, disclosure, modification, and adaptation of the programs, including any operating system, integrated software, any programs installed on the hardware, and/or documentation, shall be subject to license terms and license restrictions applicable to the programs. No other rights are granted to the U.S. Government.

This software or hardware is developed for general use in a variety of information management applications. It is not developed or intended for use in any inherently dangerous applications, including applications that may create a risk of personal injury. If you use this software or hardware in dangerous applications, then you shall be responsible to take all appropriate failsafe, backup, redundancy, and other measures to ensure its safe use. Oracle Corporation and its affiliates disclaim any liability for any damages caused by use of this software or hardware in dangerous applications.

Oracle and Java are registered trademarks of Oracle and/or its affiliates. Other names may be trademarks of their respective owners.

This software or hardware and documentation may provide access to or information on content, products and services from third parties. Oracle Corporation and its affiliates are not responsible for and expressly disclaim all warranties of any kind with respect to third-party content, products, and services. Oracle Corporation and its affiliates will not be responsible for any loss, costs, or damages incurred due to your access to or use of third-party content, products, or services.

Contents

Preface	6
Audience	6
Documentation Accessibility	6
Organization of the Guide	6
Conventions	6
1 Customizing Collections and Recovery	8
1.1 Prerequisites	8
1.2 Customizing Collections and Recovery	8
1.3 Using the Oracle Banking Collections and Oracle Banking Recovery Installer .	9
1.4 Downloading and Configuring Software and Jar Files	14
1.4.1 Downloading Eclipse	14
1.4.2 Downloading Required Jars	15
1.4.3 Configuring eclipse Project	15
1.4.4 Creating Linked Resource	20
1.4.5 Creating weblogic domain	24
1.4.6 Updating deploy.xml	25
1.4.7 Setting Variable in cmDeploy	26
1.4.8 Creating and Deploying cm.jar	28
1.4.9 Deploying SPLService, CollectionWeb and ohelp	28
1.4.10 Importing Test Project into Customization Setup	33
1.4.11 Troubleshooting JUnit	37

List of Figures

Figure 1–1 Copy SDKCommon and R_2.9.0	8
Figure 1–2 Hibernate folder	9
Figure 1–3 TEMPDIR Content	10
Figure 1–4 Config.properties	10
Figure 1–5 Config.properties	11
Figure 1–6 Silent Installation	12
Figure 1–7 Collection and Recovery Installer: Initial Details	12
Figure 1–8 Collection and Recovery Installer: Weblogic Server Details	13
Figure 1–9 Collection and Recovery Installer: Confirm Installation Details	13
Figure 1–10 Collection and Recovery Installer: Installation Complete	14
Figure 1–11 Copy Eclipse 4.4	15
Figure 1–12 Create Workspace Folder	15
Figure 1–13 Double-click Eclipse.exe	16
Figure 1–14 Workspace Launcher	16
Figure 1–15 Project Explorer - Import	17
Figure 1–16 Select Existing Projects into Workspace	18
Figure 1–17 Browse and Locate eclipseProject	19
Figure 1–18 Import Projects - Finish	20
Figure 1–19 Linked Resources	21
Figure 1–20 New Variable asBase	21
Figure 1–21 Select Folder	22
Figure 1–22 New Variable Name and Location	23
Figure 1–23 Linked Resources - Path Variables	23
Figure 1–24 Edit setDomainEnv.cmd	24

Figure 1–25 Edit setDomainEnv.cmd	25
Figure 1–26 JTA Timeout	25
Figure 1–27 deploy.xml	26
Figure 1–28 Open External Tools Dialog	26
Figure 1–29 External Tools - asBase	27
Figure 1–30 asBase - Edit User Property	27
Figure 1–31 Artifact Generator	28
Figure 1–32 cmDeploy	28
Figure 1–33 Deploy SPLService.ear	29
Figure 1–34 Deploy CollectionWeb	29
Figure 1–35 Deploy ohelp.ear	30
Figure 1–36 Creating new User	32
Figure 1–37 Setting for new User	33
Figure 1–38 Import	34
Figure 1–39 Select Existing Projects Into Workspace	35
Figure 1–40 Select eclipseTestProject	36
Figure 1–41 Import Projects	37
Figure 1–42 VM Arguments	38

Preface

This document describes the various software and configuration options required to customize Oracle Banking Collections and Oracle Banking Recovery.

This preface contains the following topics:

- Audience
- Documentation Accessibility
- Organization of the Guide
- Conventions

Audience

This document is intended for the users customizing Oracle Banking Collections and Oracle Banking Recovery.

Documentation Accessibility

For information about Oracle's commitment to accessibility, visit the Oracle Accessibility Program website at <http://www.oracle.com/us/corporate/accessibility/index.html>.

Access to Oracle Support

Oracle customers have access to electronic support through My Oracle Support. For information, visit <http://www.oracle.com/us/corporate/accessibility/support/index.html#info> or visit <http://www.oracle.com/us/corporate/accessibility/support/index.html#trs> if you are hearing impaired.

Organization of the Guide

This document contains:

[Chapter 1 Customizing Collections and Recovery](#)

This chapter describes the steps to be performed to configure Collections and Recovery.

Conventions

The following text conventions are used in this document:

Convention	Meaning
Boldface	Boldface type indicates graphical user interface elements associated with an action, or terms defined in text or the glossary.
<i>Italic</i>	Italic type indicates book titles, emphasis, or placeholder variables for which you supply particular values.
Monospace	Monospace type indicates commands within a paragraph, URLs, code in examples, text that appears on the screen, or text that you enter.

1 Customizing Collections and Recovery

This chapter describes the steps to be performed to configure Oracle Banking Collections and Oracle Banking Recovery.

1.1 Prerequisites

Following are the prerequisites:

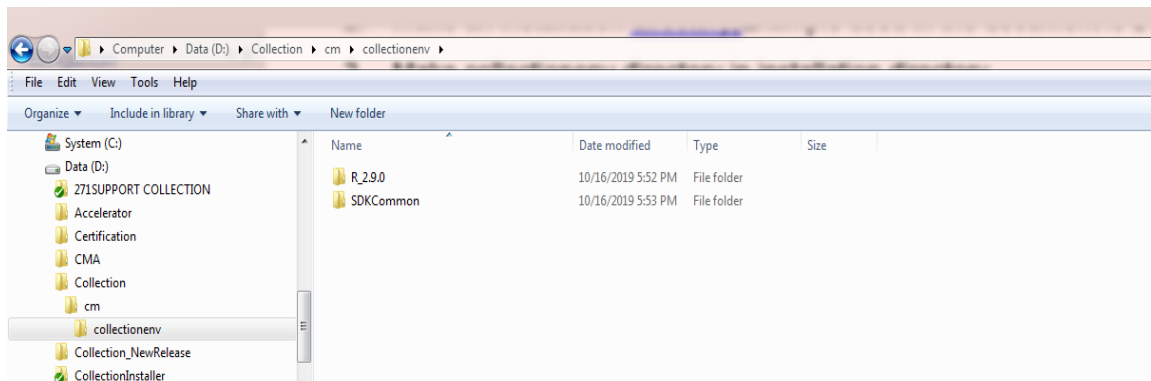
- Jdk1.8 178 bit is installed
- Weblogic Server 12.2.1.3.0 is installed

1.2 Customizing Collections and Recovery

To customize Oracle Banking Collections and Oracle Banking Recovery:

1. Download **CollectionSDK.rar** from the following location:
<http://edelivery.oracle.com/>
2. Make an installation directory(Example used in the document is D:\Collection\cm).
3. Make collectionenv directory in installation directory.
4. Unzip the CollectionSDK.rar on your D: drive.
5. Copy the **SDKCommon** and **R_2.9.0** folders to <installationDirectory>/collectionenv.

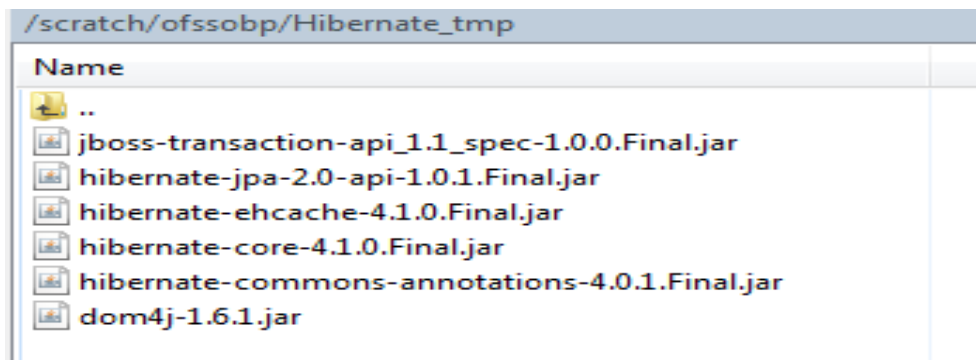
Figure 1–1 Copy SDKCommon and R_2.9.0



6. Download hibernate-release-4.1.0.Final.zip from below link.
<http://sourceforge.net/projects/hibernate/files/hibernate4/>
7. Create a hibernate directory at D:/Collection and follow the below steps:
 - a. Extract downloaded hibernate-release-4.1.0.Final.zip package in D: drive.
 - b. Copy below jars from extracted hibernate-release-4.1.0/lib/required folder to created hibernate path.

- i. hibernate-commons-annotations-4.0.1.Final.jar
 - ii. hibernate-core-4.1.0.Final.jar
 - iii. hibernate-jpa-2.0-api-1.0.1.Final.jar
 - iv. jboss-transaction-api_1.1_spec-1.0.0.Final.jar
 - v. dom4j-1.6.1.jar
- c. Copy below jar from extracted hibernate-release-4.1.0/ lib/optional/ehcache folder to create hibernate path.
- i. hibernate-ehcache-4.1.0.Final.jar

Figure 1–2 Hibernate folder



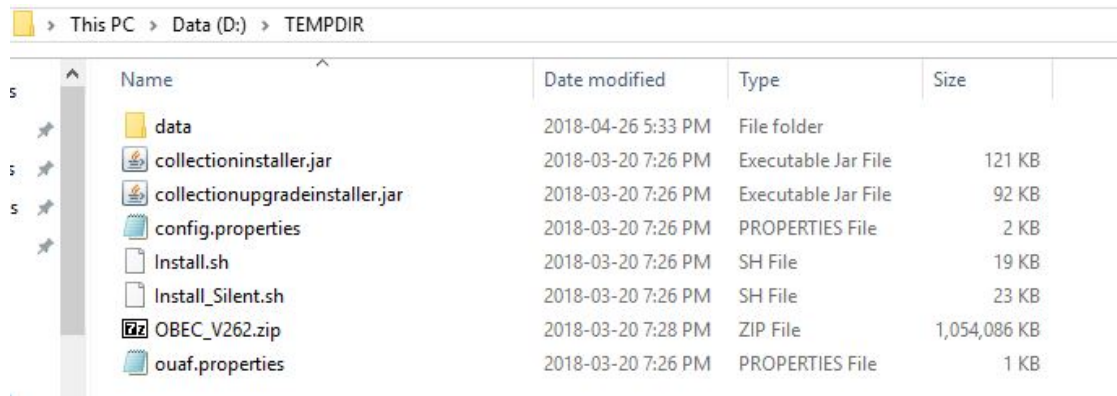
1.3 Using the Oracle Banking Collections and Oracle Banking Recovery Installer

To use Installer for customization setup:

1. Download the Installer from the following location:
<http://edelivery.oracle.com/>
2. Copy the Oracle Banking Collections and Oracle Banking Recovery 2.9.0.0.0 installation package, `Collection_V[Build_Number].zip`, which you have downloaded from the edelivery to a TEMP location.
3. Extract the zip.
4. Uncompress the `Collection_V[Build_Number].zip` file using the following command:

```
cd <PATH>/TEMPDIR unzip Collection_V[Build_Number].zip
```

Where, `<PATH>` is the path where the `TEMPDIR` folder is located.
The contents of the zip file are extracted in the `TEMPDIR` folder.

Figure 1–3 TEMPDIR Content


Name	Date modified	Type	Size
data	2018-04-26 5:33 PM	File folder	
collectioninstaller.jar	2018-03-20 7:26 PM	Executable Jar File	121 KB
collectionupgradeinstaller.jar	2018-03-20 7:26 PM	Executable Jar File	92 KB
config.properties	2018-03-20 7:26 PM	PROPERTIES File	2 KB
Install.sh	2018-03-20 7:26 PM	SH File	19 KB
Install_Silent.sh	2018-03-20 7:26 PM	SH File	23 KB
OBEC_V262.zip	2018-03-20 7:28 PM	ZIP File	1,054,086 KB
ouaf.properties	2018-03-20 7:26 PM	PROPERTIES File	1 KB

5. Change the `IS_DEV_ENV` property in `config.properties` to `True`.

Figure 1–4 Config.properties


```

config.properties - Notepad
File Edit Format View Help
IS_DEV_ENV=true
OBP_HOST_LIB=ob.host.app/ob.app.host.coll/APP-INF/lib
OBP_THIRDPARTY_LIB=ob.host.app/ob.app.host.tp/APP-INF/lib
IS_UI_ENABLED=Y
#TNTTTΔI ΔFTΔTI ΔI

```

6. Installer operates in two modes, go with either mode.
 - Silent mode
 - a. Update `config.properties` in the `TEMPDIR` directory, set:


```

OPERATING_SYSTEM=Windows
IS_UI_ENABLED=N
HOST_CONFIG=N
UI_CONFIG=N
BATCH_CONFIG=N
CUSTOM_SUPPORT=Y
THREADPOOL_CONFIG=N
              
```

- b. Also, update the below sections in config.properties file.
- DB CONFIGURATION
 - CUSTOMIZATION CONFIGURATION

Figure 1–5 Config.properties

```

OPERATING_SYSTEM=Windows
INSTALL_DIR=/scratch/app/product/fmw/obpinstall/obp
HOST_CONFIG=N
UI_CONFIG=N
BATCH_CONFIG=N
CUSTOM_SUPPORT=Y
THREADPOOL_CONFIG=N
DOMAINNAME=
#UI CONFIGURATION
UI_LOG_DIR=/scratch/app/product/fmw/obpinstall/obp/fclogs/logs
UI_IP_ADDRESS=UI_IP
UI_PORT=8001
UI_WEBLOGIC_USERNAME=weblogic
UI_WEBLOGIC_PASSWORD=password
UI_DATASOURCE=jdbc/FCBDataSource_NonXA
UI_ADMINSERVERPORT=7001
#HOST CONFIGURATION
HOST_IP_ADDRESS=HOST_IP
HOST_PORT=8001
HOST_LOG_DIR=/scratch/app/product/fmw/obpinstall/obp/fclogs/logs
JAVA_HOME=/scratch/app/product/jdk1.8.0_172
HIBERNATE_JAR_DIR=/scratch/ofssobp/Hibernate_tmp
HOST_WEBLOGIC_USERNAME=weblogic
HOST_WEBLOGIC_PASSWORD=password
HOST_DATASOURCE=jdbc/FCBDataSource_NonXA
HOST_ADMINSERVERPORT=7001
#DB CONFIGURATION
DB_IP_ADDRESS=
DB_PORT=1521
DB_SID=P26184B
DB_USERNAME=COL27
DB_PASSWORD=
#BATCH CONFIGURATION
THREADPOOL_NAME=MT
NUMBER_OF_THREADS=5
BATCH_USER=SYSUSER
BATCH_LOG_DIR=/scratch/app/product/fmw/obpinstall/obp/fclogs/logs
#THREADPOOL CONFIGURATION
WEBLOGIC_SERVER_HOME=/scratch/app/product/fmw/wlserver
RMI_PORT=2020
DOMAIN_PATH=/scratch/app/product/fmw/user_projects/domains/
DOMAIN_NAME=host_domain
CLUSTER_NAME=IUT2
CLUSTER_MULTICAST_LISTNER_IP_ADDRESS=232.0.0.1
CLUSTER_MULTICAST_LISTNER_PORT=6660
TARGETTYPE=2
TARGETJMSERVER=obphost_cluster1
#CUSTOMIZATION CONFIGURATION
CM_INSTALL_DIR=D:/Collection/cm
CM_WLS_HOME_DIR=D:/server/wls12213
CM_LOG_DIR=D:/Collection/cm/logs
CM_HIBERNATE_DIR=D:/Collection/hibernate

```

- c. Ensure backward slashes (/) are used in path. (Eg : D:/Collection/cm)
- d. Run the executable jar (java -jar collectioninstaller.jar).

Figure 1–6 Silent Installation

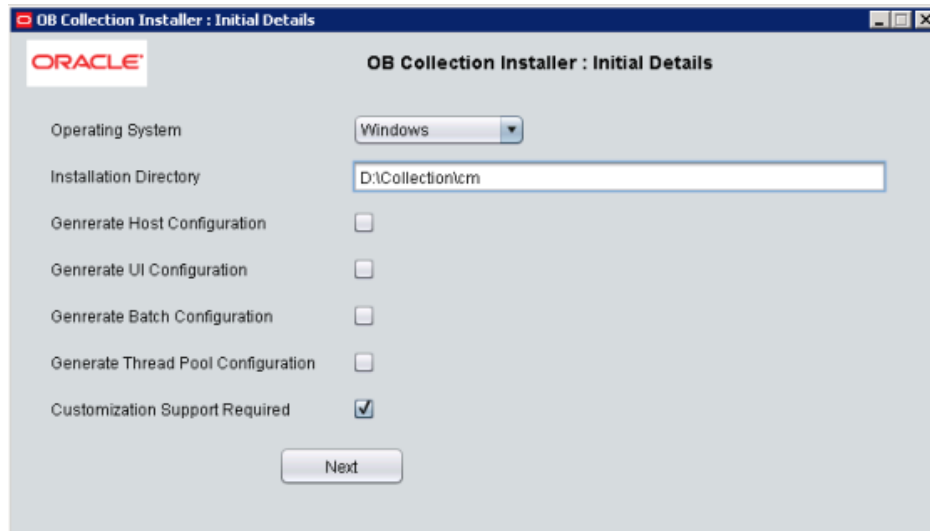
```

Administrator: C:\W
D:\Test\CMInstaller\OBEC_U270\OBEC_U270>java -jar collectionInstaller.jar
Creating directory structure.
Creating directory structure successful.
Extracting OAAF libs
Extracting OAAF Successful
Copying Customization files libs.
log4j:WARN No appenders could be found for logger <com.splwg.shared.enviro.ApplicationProperties>.
log4j:WARN Please initialize the log4j system properly.
log4j:WARN See http://logging.apache.org/log4j/1.2/faq.html#noconfig for more info.
ERROR: Could not load classpath property file 'spl.properties'
Cleanup of extracted files.
U75597-01.zipCleanup of extracted files successful.
Installation successful!
D:\Test\CMInstaller\OBEC_U270\OBEC_U270>_

```

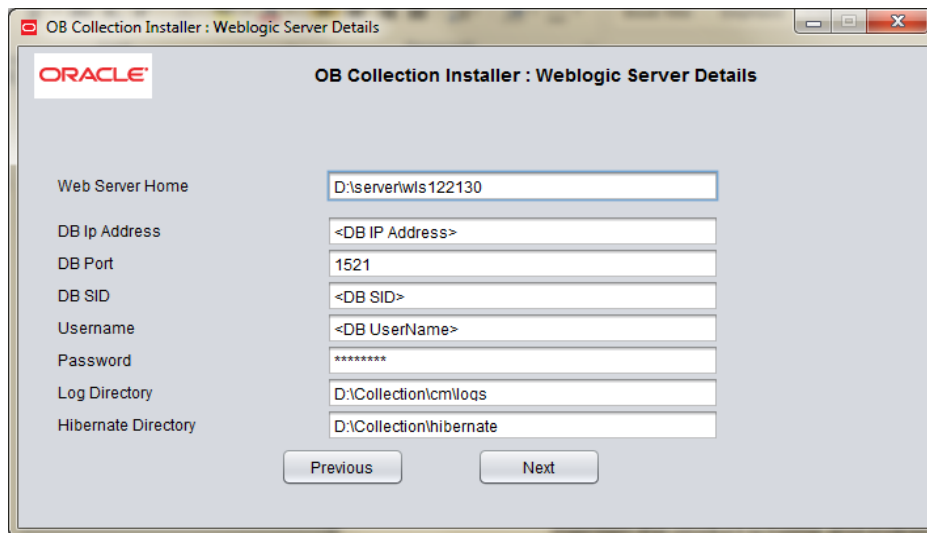
- GUI Mode
 - a. Run the executable jar (java -jar collectioninstaller.jar). The Installer opens.
 - b. In the Initial Details dialog box, enter the **Installation Directory** as *D:\Collection\cm* as the location where it is to be installed.

Figure 1–7 Collection and Recovery Installer: Initial Details



- c. Select the **Customization Support Required** checkbox.
- d. Click **Next**.

Figure 1–8 Collection and Recovery Installer: Weblogic Server Details



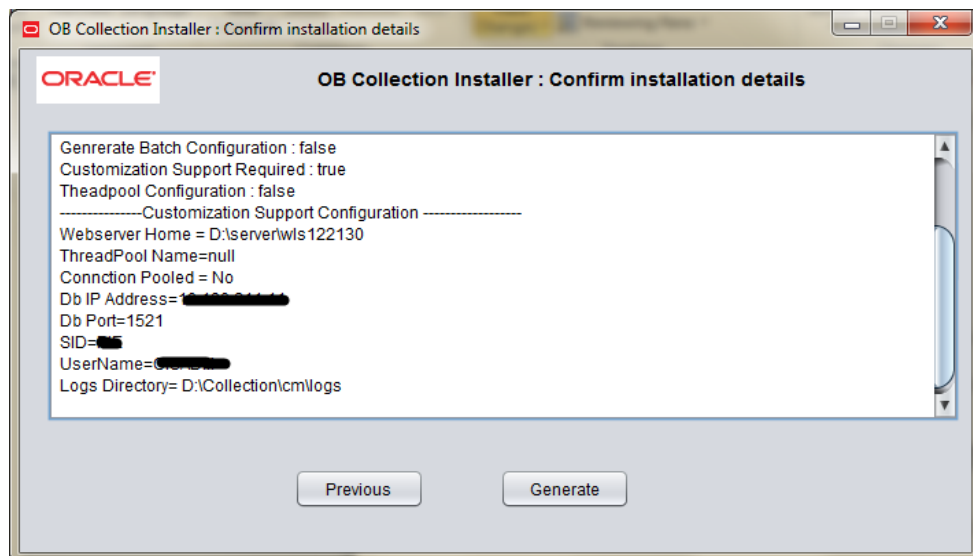
- e. In Server Details dialog box, enter required details and click **Next**.

Web Server Home: Path to the Weblogic home directory (Example : D:\server\wls122130)

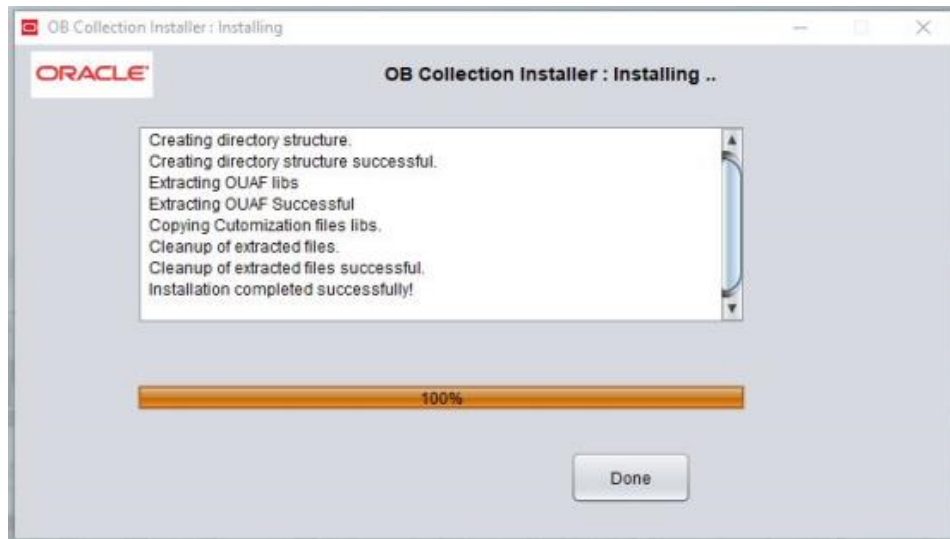
Username/Password: Credentials of the DB

- f. Click **Generate**.

Figure 1–9 Collection and Recovery Installer: Confirm Installation Details



- g. Click **Done**.

Figure 1–10 Collection and Recovery Installer: Installation Complete

1.4 Downloading and Configuring Software and Jar Files

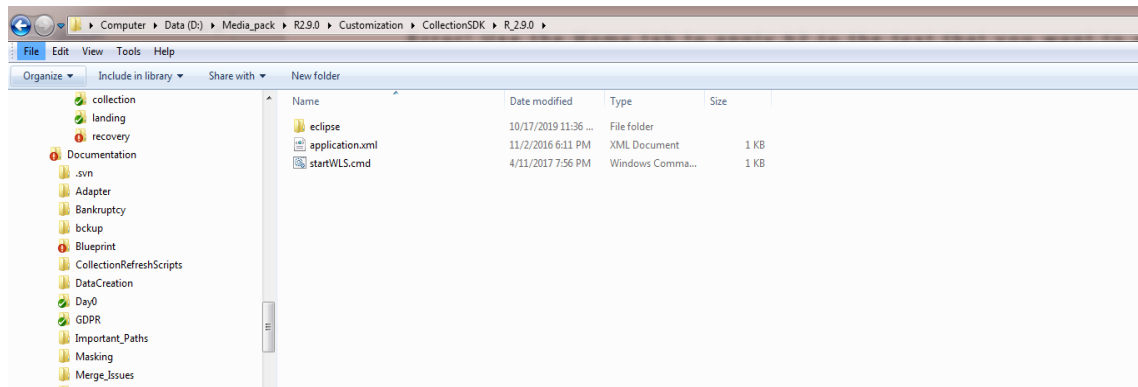
This section provides information on downloading and configuring the requisite software and jar files.

1.4.1 Downloading Eclipse

To download Eclipse:

1. Download Eclipse Neon from the following location:
http://www.eclipse.org/downloads/download.php?file=/technology/epp/downloads/release/neon/3/eclipse-java-neon-3-win32-x86_64.zip
2. Copy the downloaded Eclipse folder to the R_2.9.0 folder.
3. Copy Plugins from SDKCommon to Eclipse plugin folder.
From location : \SDKCommon\plugins
To location : \R_2.9.0\Eclipse\plugins

Figure 1–11 Copy Eclipse 4.4



1.4.2 Downloading Required Jars

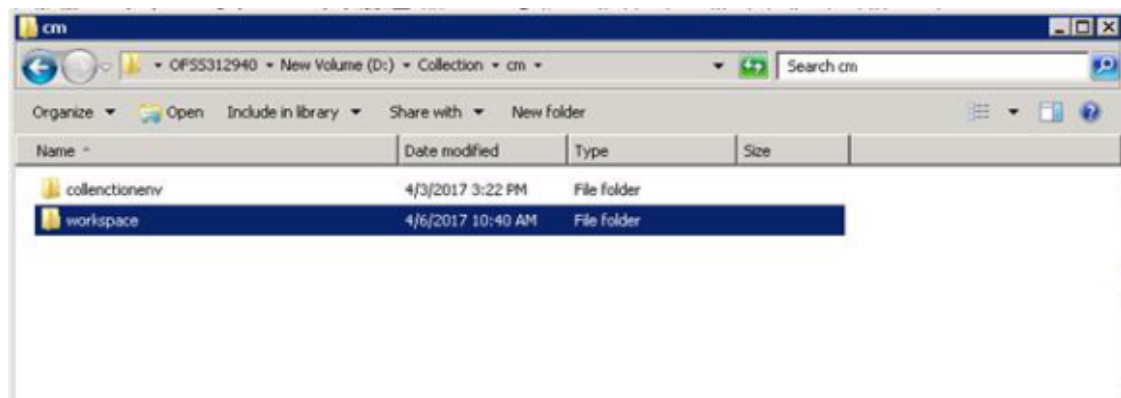
1. Download json-rpc jar from the following url:
<https://mvnrepository.com/artifact/com.metaparadigm/json-rpc/1.0>
2. Copy the jar file to the following location:
\\SDKCommon\tools

1.4.3 Configuring eclipse Project

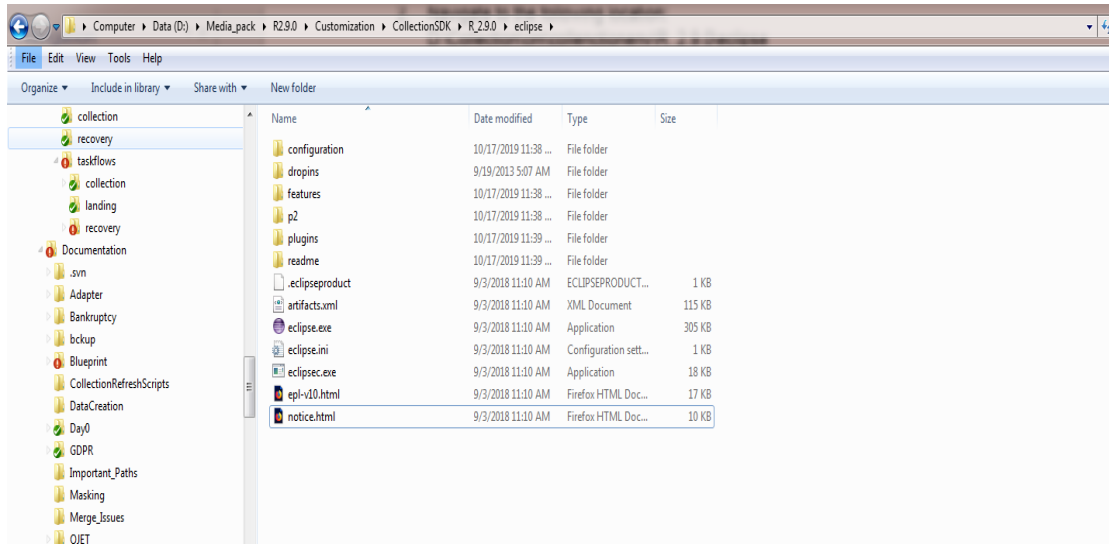
To select and configure eclipse Project:

1. Create a new folder named **Workspace** where you have installed the environment.

Figure 1–12 Create Workspace Folder



2. Navigate to the following location:
D:\Collection\cm\collectionenv\R_2.9.0\eclipse
3. Double-click **Eclipse.exe**.

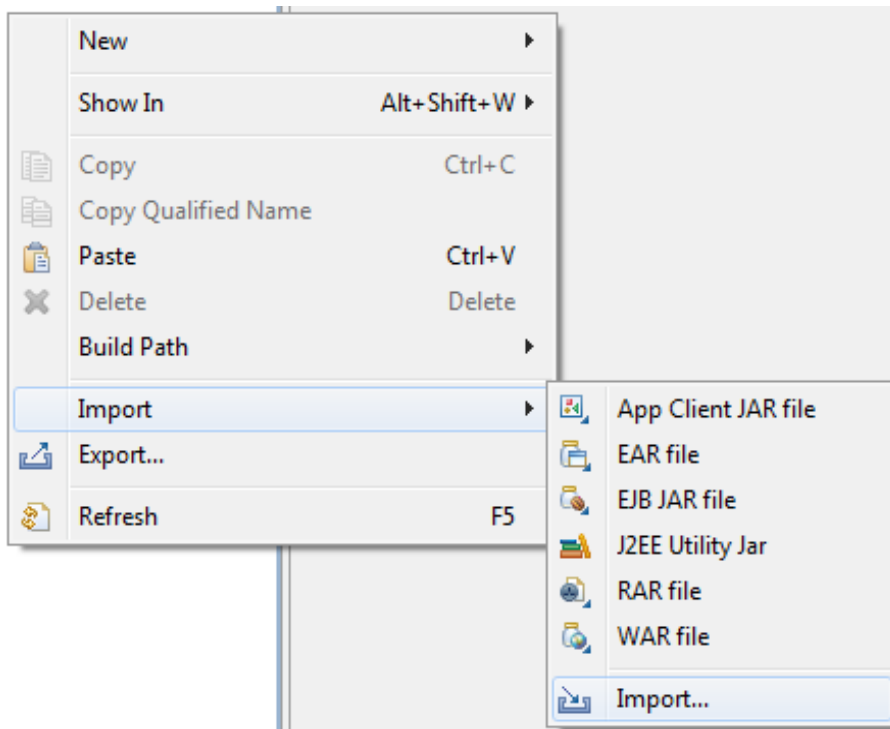
Figure 1–13 Double-click Eclipse.exe

- In the Workspace Launcher dialog box, click **Browse**, and locate the path where you have created workspace folder.

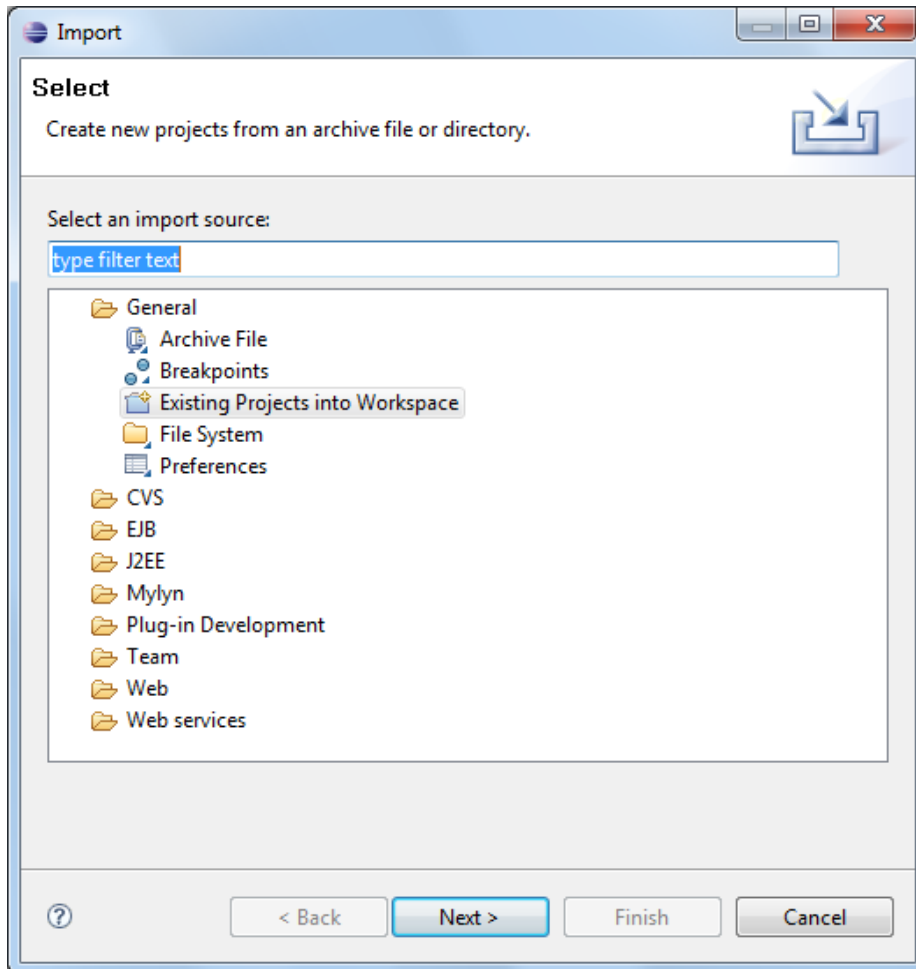
Figure 1–14 Workspace Launcher

- Click **OK**.
- Right-click the Project Explorer, and select **Import** → **Import**.

Figure 1–15 Project Explorer - Import



7. In the Import dialog box, select the **Existing Projects into Workspace** option.

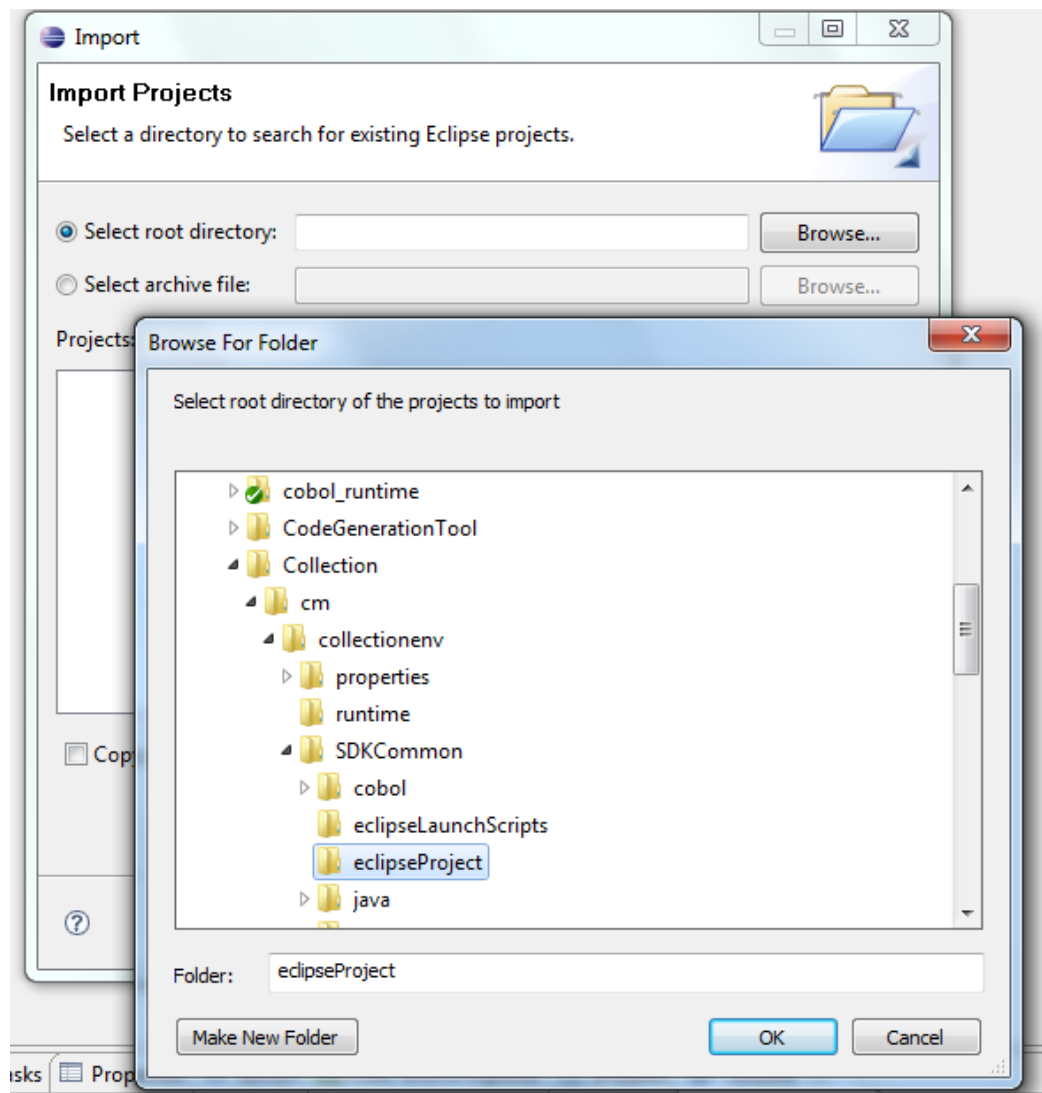
Figure 1–16 Select Existing Projects into Workspace

8. Click **Next**.
9. In the Import dialog box, select **Select root directory** option, and click **Browse**.
10. In the **Browse For Folder**, select **eclipseProject**.

You can locate the eclipseProject at:

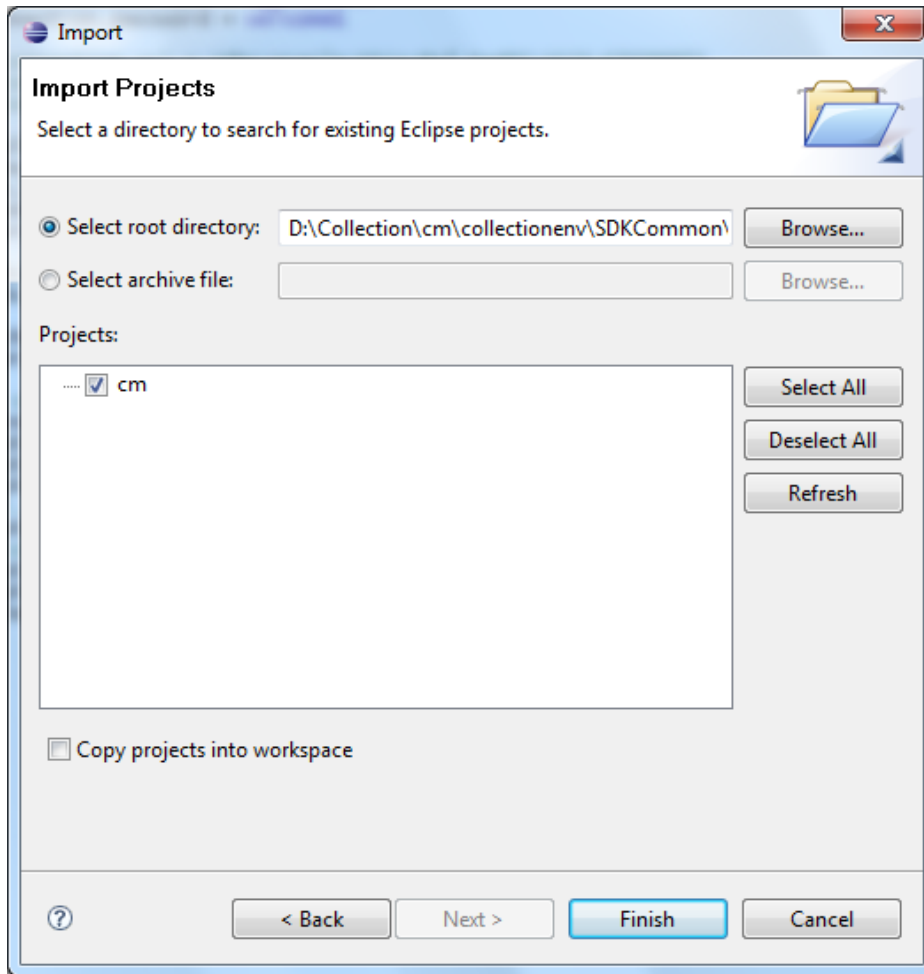
{Collection Environment Directory}\SDKCommon\eclipseProject

Figure 1–17 Browse and Locate eclipseProject



11. Click **OK**.
12. In the Import dialog box, click **Finish**.

Figure 1–18 Import Projects - Finish

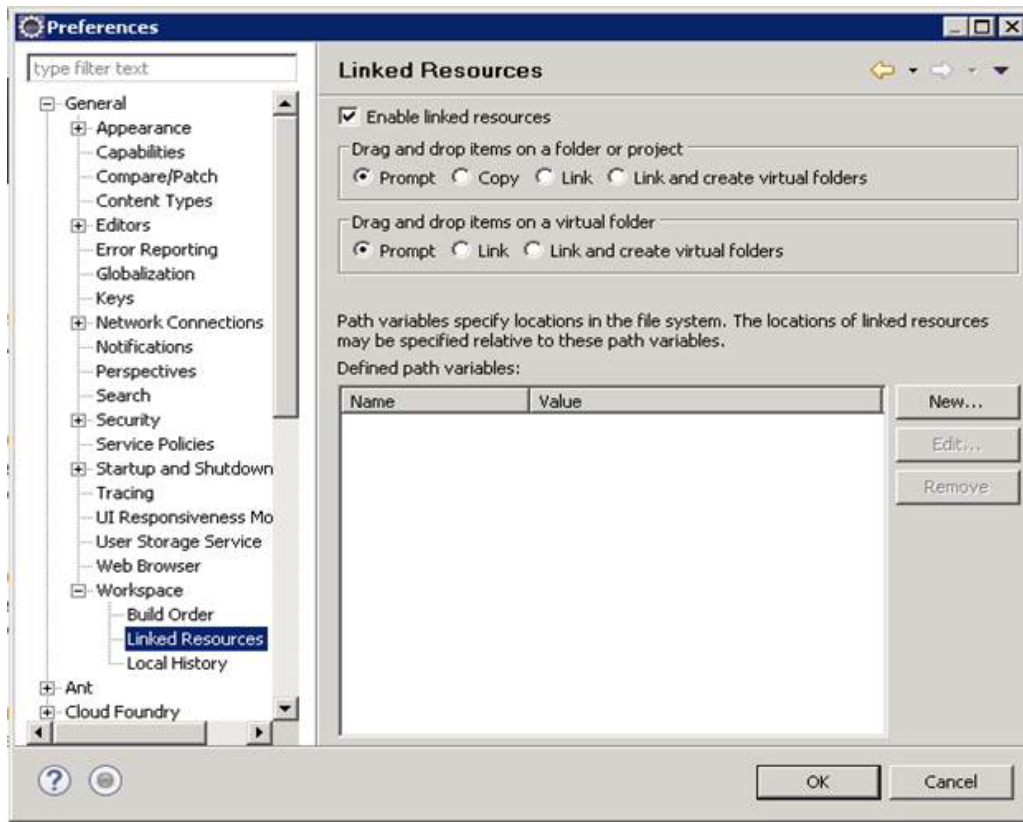


1.4.4 Creating Linked Resource

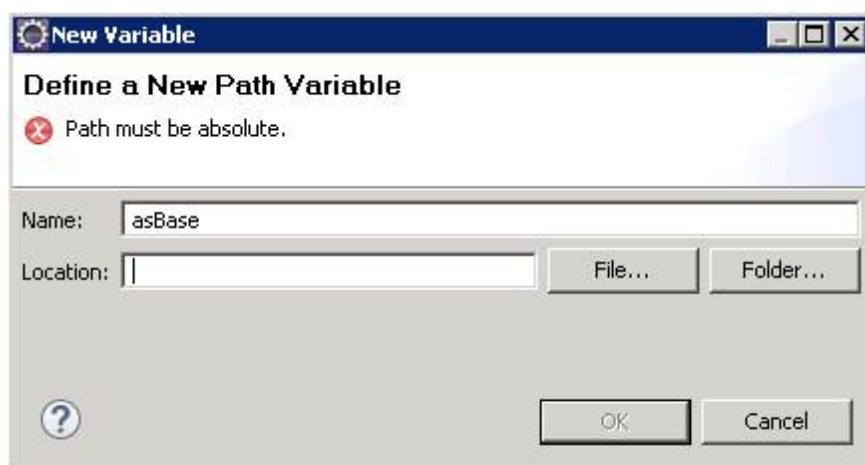
To create linked resource:

1. Navigate to **Window** → **Preferences**.
2. In the **Preferences** dialog box, go to **General** → **Workspace** → **Linked Resource**.

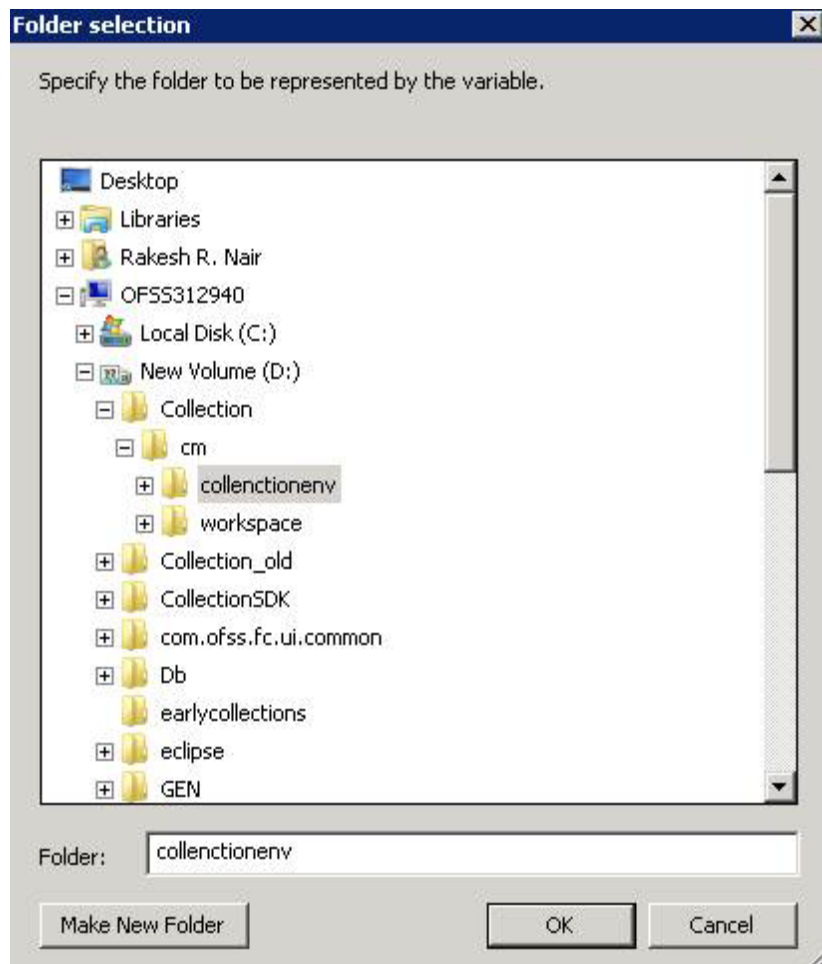
Figure 1–19 Linked Resources



3. Click **New**.
4. In the **New Variable** dialog box, type `asBase` in the **Name** field.

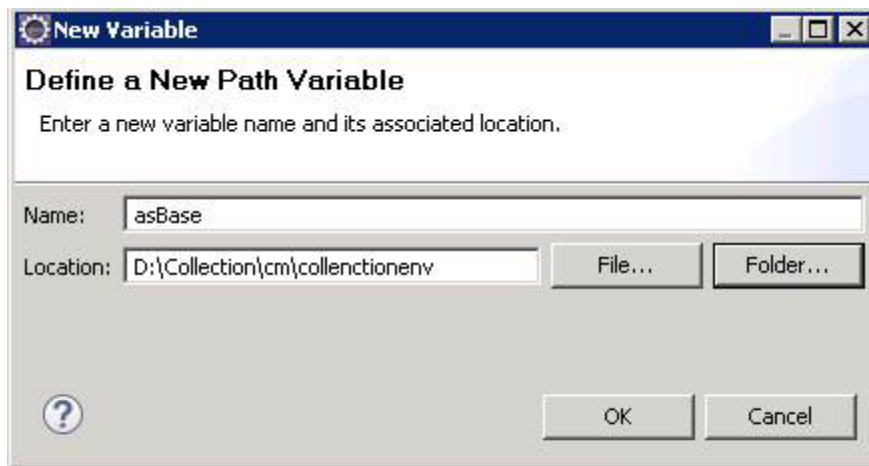
Figure 1–20 New Variable `asBase`

5. To specify location, click **Folder** and select the location where you have installed the environment.

Figure 1–21 Select Folder

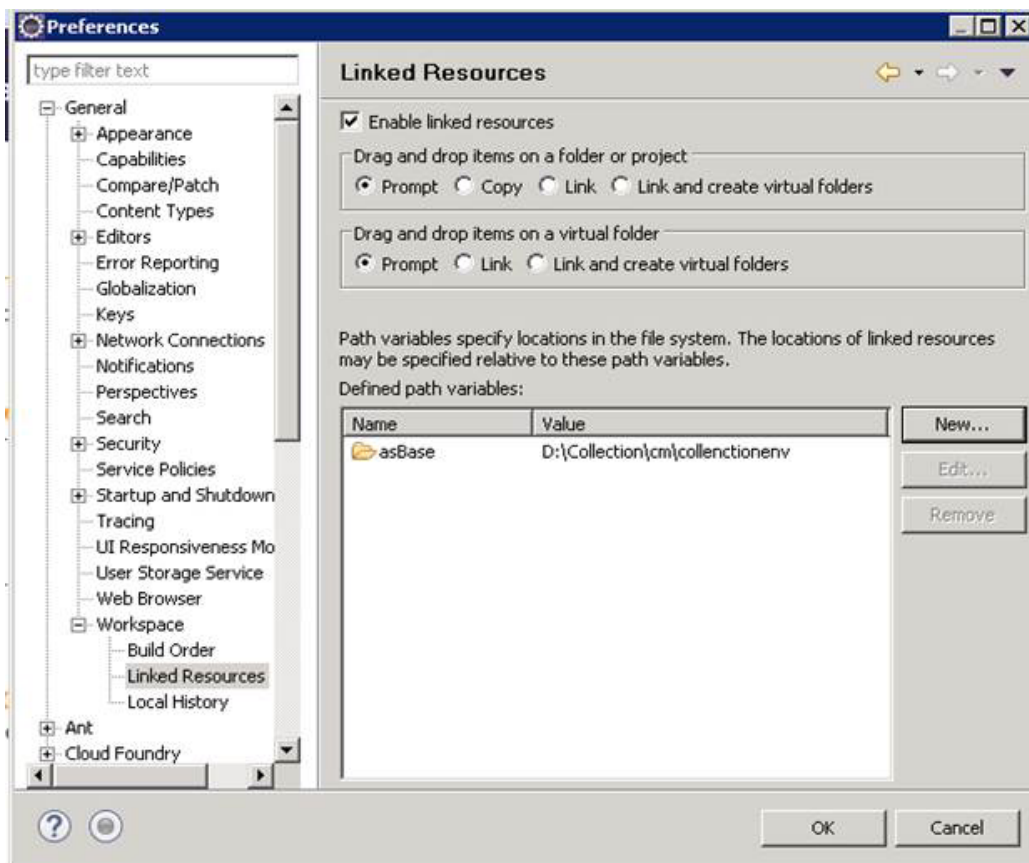
6. Click **OK**. The new variable name and location is set.

Figure 1–22 New Variable Name and Location



7. Click **OK**.

Figure 1–23 Linked Resources - Path Variables



8. Click **OK**.
9. Refresh project.

1.4.5 Creating weblogic domain

This section provides information on creating a new weblogic domain.

1. Open the weblogic installation directory.
2. Execute `wlstpy.cmd`.
3. New domain `<weblogic_root>/user_projects/domains/cm_domain` will be generated.
4. Remove jar `cglib.cglib-nodep.jar` from the location `<weblogic_root>/wlserver/modules`.
5. Edit `<weblogic_root>/user_projects/domains/cm_domain/setDomainEnv.cmd`
 - a. Search for `@REM IF USER_MEM_ARGS`
 - b. Add below line next to it
6. Set `USER_MEM_ARGS=-Xms128m -Xmx3072m %MEM_DEV_ARGS% %MEM_MAX_PERM_SIZE%`

Figure 1–24 Edit setDomainEnv.cmd

```

5         call "%DOMAIN_HOME%\bin\setStartupEnv.cmd"
6     )
7 )
8
9 @REM Set user overrides, if available.
10
11 if exist %DOMAIN_HOME%\bin\setUserOverrides.cmd (
12     call "%DOMAIN_HOME%\bin\setUserOverrides.cmd"
13 )
14
15 @REM IF USER_MEM_ARGS the environment variable is set, use it to override ALL MEM_ARGS
16 set USER_MEM_ARGS=-Xms128m -Xmx3072m %MEM_DEV_ARGS% %MEM_MAX_PERM_SIZE%
17 if NOT "%USER_MEM_ARGS%"==" " (
18     set MEM_ARGS=%USER_MEM_ARGS%
19 )
20
21 set JAVA_PROPERTIES=-Dwls.home=%WLS_HOME% -Dweblogic.home=%WLS_HOME%

```

- a. Search for `@REM PROFILING SUPPORT`
 - b. Add below line as show in screenshot and save `setDomainEnv.cmd` file
7. Set `JAVA_OPTIONS=%JAVA_OPTIONS% -Djavax.xml.parsers.SAXParserFactory=com.sun.org.apache.xerces.internal.jaxp.SAXParserFactoryImpl`

Figure 1–25 Edit setDomainEnv.cmd

```

@REM PROFILING SUPPORT
set JAVA_PROFILE=
set SERVER_CLASS=weblogic.Server
set JAVA_PROPERTIES=%JAVA_PROPERTIES% %WLP_JAVA_PROPERTIES%
set JAVA_OPTIONS=%JAVA_OPTIONS% %JAVA_PROPERTIES%
set JAVA_OPTIONS=%JAVA_OPTIONS% -Djavax.xml.parsers.SAXParserFactory=com.sun.org.apache.xerces.internal.jaxp.SAXParserFactoryImpl
if "%PRODUCTION_MODE%"=="true" (
    set JAVA_OPTIONS= -Dweblogic.ProductionModeEnabled=true %JAVA_OPTIONS%
)

```

8. Run `<weblogic_root>/user_projects/domains/cm_domain/startWebLogic.cmd` to bring the adminserver up.
9. Open `http://localhost:7001/console` with default username/password: `weblogic/weblogic1`.
10. Open `cm_domain` -> JTA and increase the timeout seconds to 300.
11. Click Save.

Figure 1–26 JTA Timeout

Settings for cm_domain

Configuration Monitoring Control Security Web Service Security ZDT Control Notes

General **JTA** Concurrency JPA EJBs Web Applications Logging Log Filters Batch

Save

Use this page to define the Java Transaction API (JTA) configuration of this WebLogic Server domain.

Timeout Seconds:	300
Abandon Timeout Seconds:	86400
Before Completion Iteration Limit:	10
Max Transactions:	10000
Max Unique Name Statistics:	1000
Checkpoint Interval Seconds:	300

Write recovery logs when determiners configured

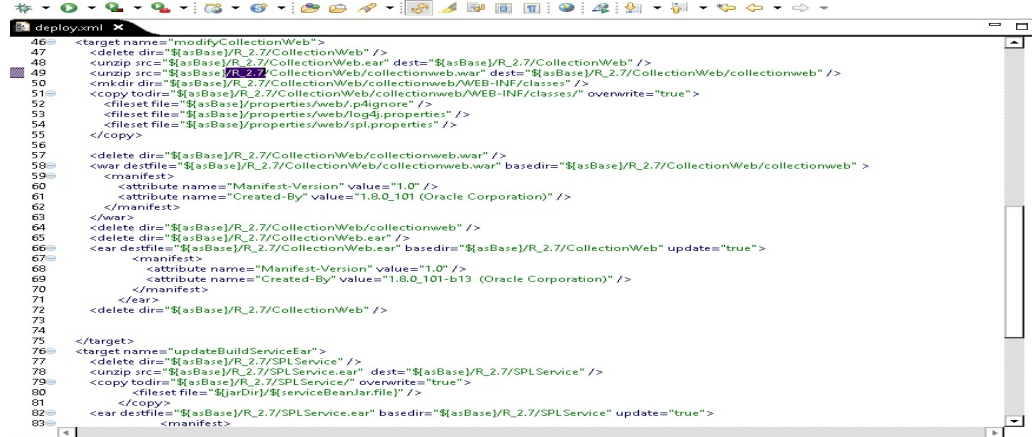
1.4.6 Updating deploy.xml

This section provides information on the various file updates required.

1. Change deploy.xml.

- Navigate to project **cm** → **tools** → **deploy.xml** and open it.
- Change the **asBase** variable to **{Collection Environment Directory}**.
- Change the **webBase** variable to **{Weblogic server root directory}**.

Figure 1–27 *deploy.xml*



```

46<target name="modifyCollectionWeb">
47  <delete dir="${asBase}/R_2.7/CollectionWeb" />
48  <unzip src="${asBase}/R_2.7/CollectionWeb.ear" dest="${asBase}/R_2.7/CollectionWeb" />
49  <unzip src="${asBase}/R_2.7/CollectionWeb/collectionweb.war" dest="${asBase}/R_2.7/CollectionWeb/collectionweb" />
50  <mkdir dir="${asBase}/R_2.7/CollectionWeb/collectionweb/WEB-INF/classes" />
51  <copy todir="${asBase}/R_2.7/CollectionWeb/collectionweb/WEB-INF/classes" overwrite="true">
52    <fileset file="${asBase}/properties/web/p4ignore" />
53    <fileset file="${asBase}/properties/web/log4j.properties" />
54    <fileset file="${asBase}/properties/web/spl.properties" />
55  </copy>
56
57  <delete dir="${asBase}/R_2.7/CollectionWeb/collectionweb.war" />
58  <war destfile="${asBase}/R_2.7/CollectionWeb/collectionweb.war" basedir="${asBase}/R_2.7/CollectionWeb/collectionweb" />
59  <manifest>
60    <attribute name="Manifest-Version" value="1.0" />
61    <attribute name="Created-By" value="1.8.0_101 (Oracle Corporation)" />
62  </manifest>
63  </war>
64  <delete dir="${asBase}/R_2.7/CollectionWeb/collectionweb" />
65  <delete dir="${asBase}/R_2.7/CollectionWeb.ear" />
66  <ear destfile="${asBase}/R_2.7/CollectionWeb.ear" basedir="${asBase}/R_2.7/CollectionWeb" update="true">
67    <manifest>
68      <attribute name="Manifest-Version" value="1.0" />
69      <attribute name="Created-By" value="1.8.0_101-b13 (Oracle Corporation)" />
70    </manifest>
71  </ear>
72  <delete dir="${asBase}/R_2.7/CollectionWeb" />
73
74</target>
75
76<target name="updateBuildServiceEar">
77  <delete dir="${asBase}/R_2.7/SPLService" />
78  <unzip src="${asBase}/R_2.7/SPLService.ear" dest="${asBase}/R_2.7/SPLService" />
79  <copy todir="${asBase}/R_2.7/SPLService" overwrite="true">
80    <fileset file="${jarDir}/serviceBeanJar.file" />
81  </copy>
82  <ear destfile="${asBase}/R_2.7/SPLService.ear" basedir="${asBase}/R_2.7/SPLService" update="true">
83    <manifest>

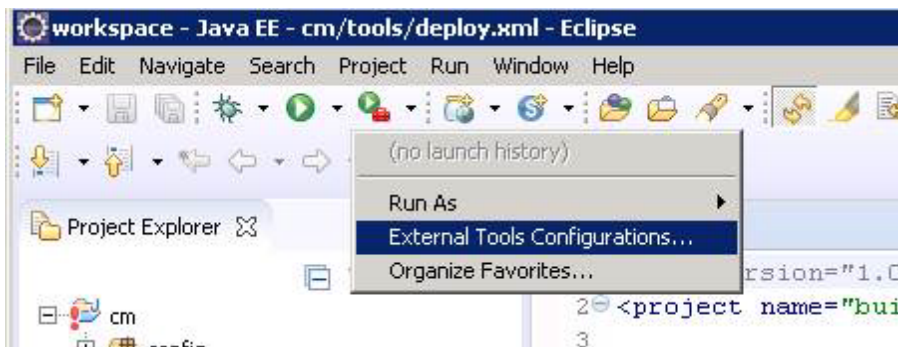
```

1.4.7 Setting Variable in cmDeploy

To set asBase variable in cmDeploy ant script:

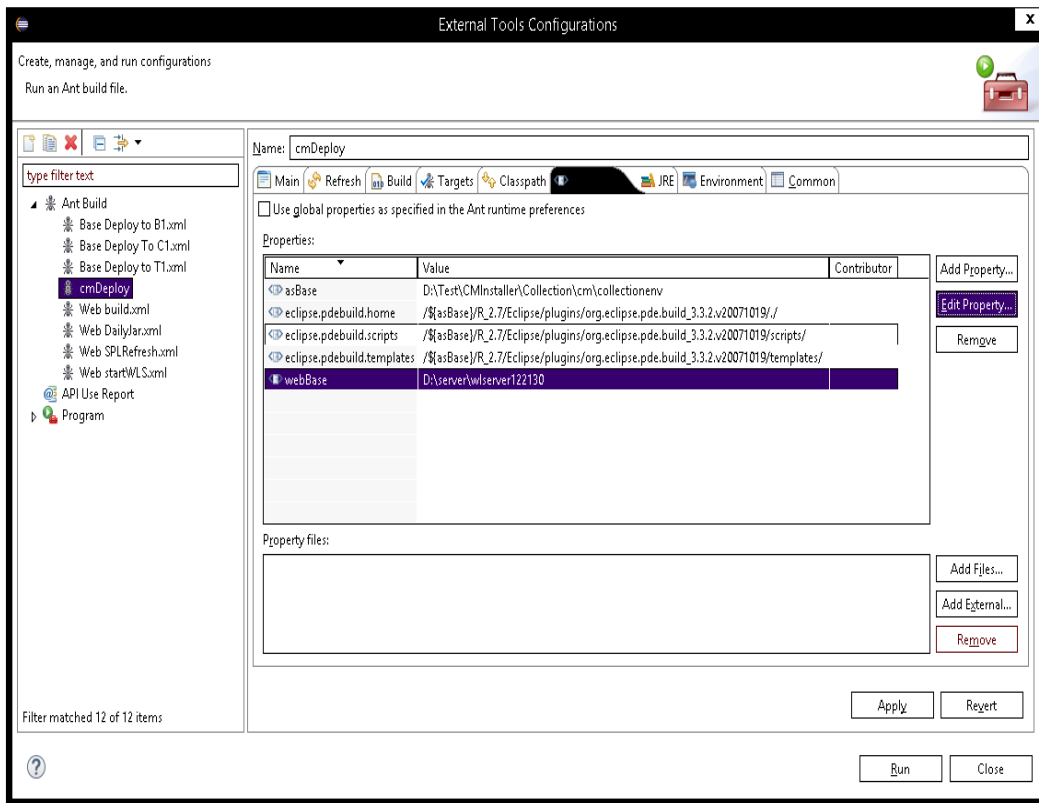
- Navigate to **Open External Tools Dialog** by clicking **Run** → **External Tools** → **ExternalTools Configurations**.

Figure 1–28 *Open External Tools Dialog*



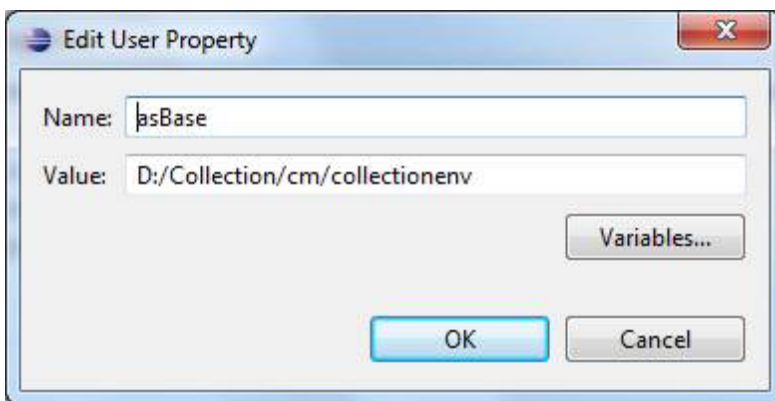
- In the **External Tools** dialog box, select **cmDeploy** and edit asBase and webBase property.

Figure 1–29 External Tools - asBase

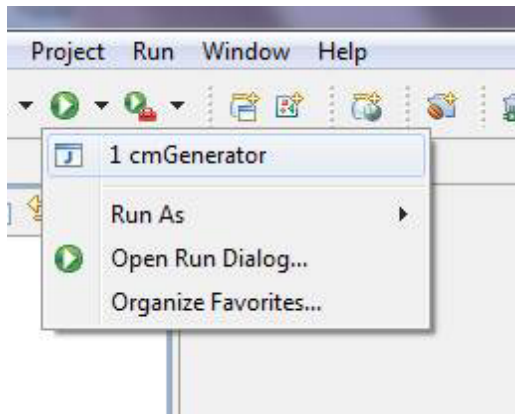


3. Click **Edit Property** and specify the path where you have installed collection environment.

Figure 1–30 asBase - Edit User Property



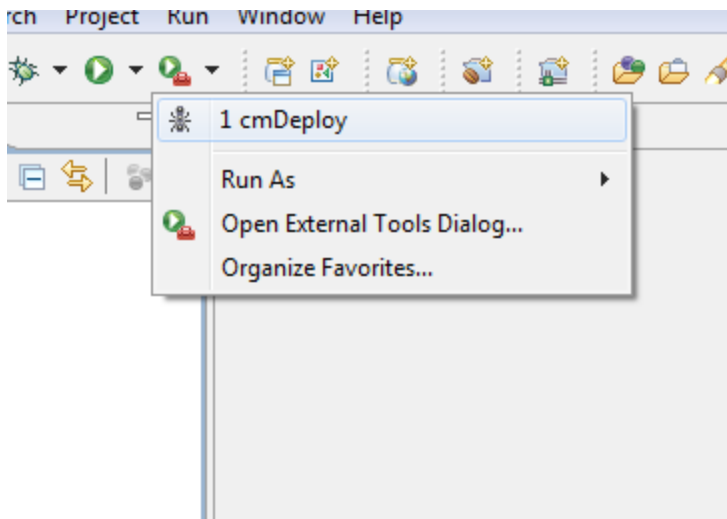
4. Click **Ok** and apply.
5. Run the artifact generator to ensure that the setup runs correctly.

Figure 1–31 Artifact Generator

1.4.8 Creating and Deploying cm.jar

To create and deploy cm.jar:

1. Create cm.jar and SPLService.ear using cmDeploy Ant script.

Figure 1–32 cmDeploy

After you run the ant script, cm.jar is created at following location:

{Your collection environment}\standalone\lib\cm.jar

1.4.9 Deploying SPLService, CollectionWeb and ohelp

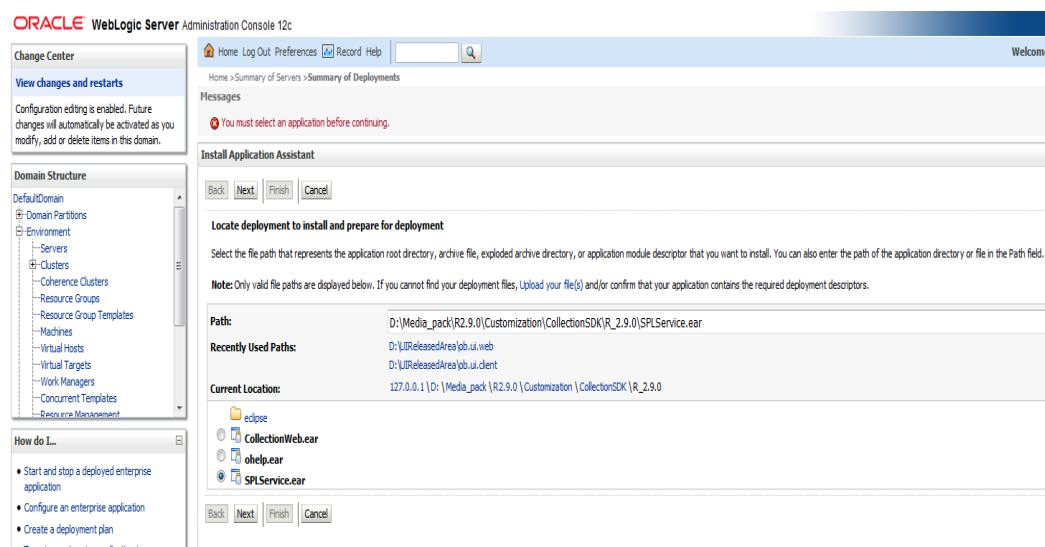
Deploy the CollectionWeb application to the newly created domain.

1. Stop weblogic server using below command :
 - a. cd <Insatllation Directory>/user_projects/domains/cm_domain/bin
 - b. stopWeblogic.cmd
2. Open http://localhost:7001/console with default username/password: weblogic/weblogic1

Step 1 Deploy SPLService.ear

1. Navigate to **Deployments -> Install**
2. Specify SPLService.ear path :
<Insatllation Directory>/collectionenv/R_2.9.0

Figure 1–33 Deploy SPLService.ear

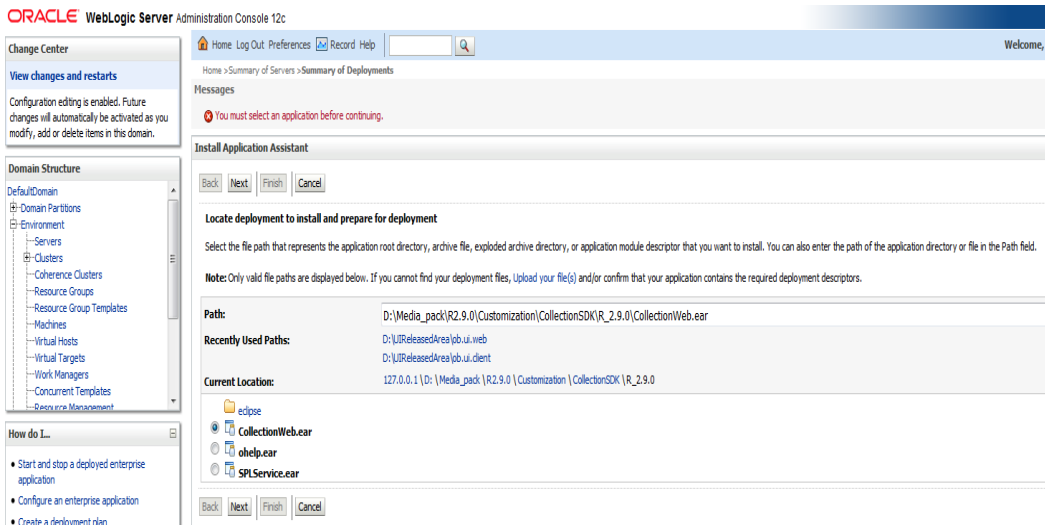


3. Select **SPLService.ear** ->Install as Application
4. Click **Next** -> **Finish**
5. **Default Deployment Order: 100**
6. Click **Save**

Step 2 Deploy CollectionWeb.ear

1. Navigate to **Deployments -> Install**
2. Specify CollectionWeb.ear path:
<Insatllation Directory>/collectionenv/R_2.9.0/

Figure 1–34 Deploy CollectionWeb



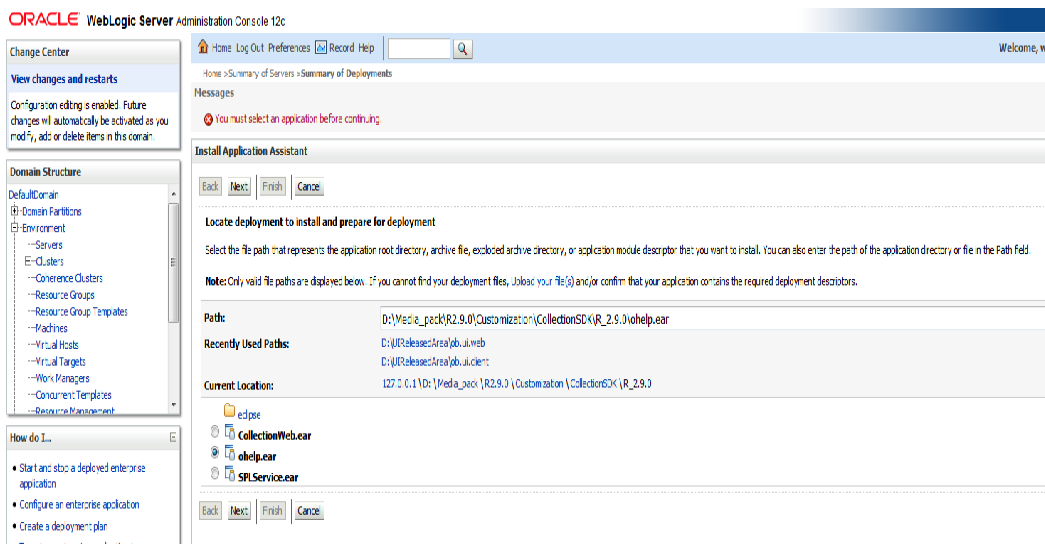
3. Select **CollectionWeb.ear**
4. Click **Next -> Finish**
5. **Set Deployment Order: 200**
6. Click **Save**

Step 3 Deploying ohelp.ear

1. Navigate to **Deployments -> Install**
2. Specify SPLService.ear path :

<Installation Directory>/collectionenv/R_2.9.0/

Figure 1–35 Deploy ohelp.ear



3. Select **ohelp.ear**

4. Click **Next** -> **Finish**
5. **Set Deployment Order: 300**
6. Click **Save**

Step 4 Checking State of above deployments

1. Navigate to **Deployment** -> **Install**
2. You can see State of both deployment will be Active.

Step 5 Configure User:

1. Open <http://localhost:7001/console>
2. Navigate to **Security Releams** -> **myrealm**
3. Open **User and Groups panel** -> **Groups** -> **new**
4. Create new group **cisuser** as shown below:
5. Click **OK**
6. Navigate to **Users panel** -> **new**
7. Create new user **sysuser** as shown below:

8. Associate password for user (For eg. welcome1).

Figure 1–36 Creating new User

Create a New User

OK Cancel

User Properties

The following properties will be used to identify your new User.
* Indicates required fields

What would you like to name your new User?

* **Name:**

How would you like to describe the new User?

Description:

Please choose a provider for the user.

Provider:

The password is associated with the login name for the new User.

* **Password:**

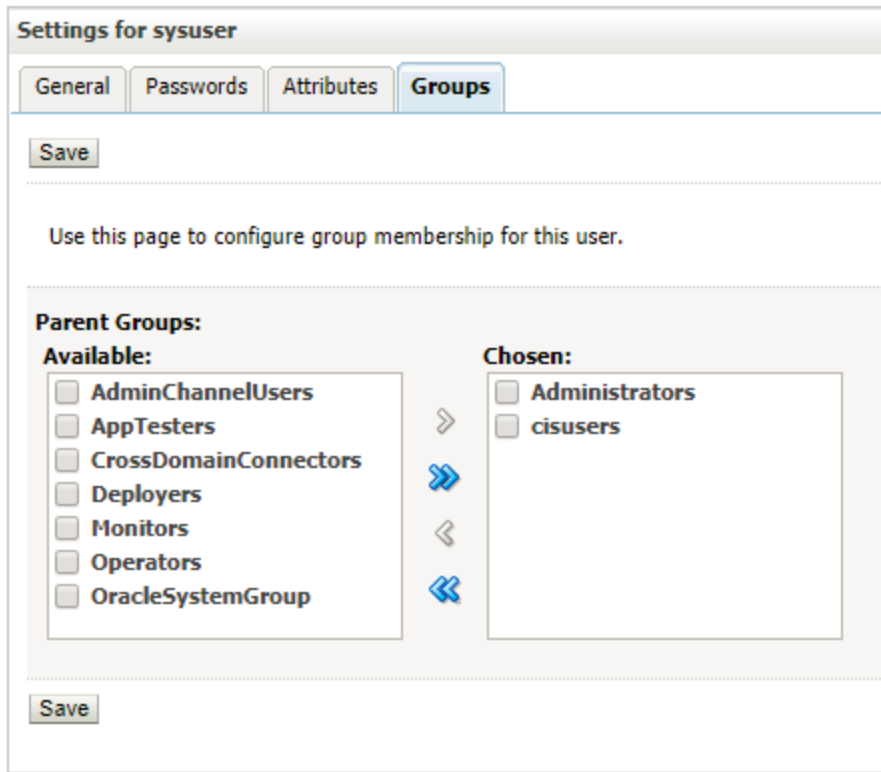
* **Confirm Password:**

OK Cancel

9. Click **OK**
10. Click on **sysuser** -> **Groups**

11. Select **Administrator** and **cisuser** and move to right as shown below:

Figure 1–37 Setting for new User



12. Click **Save**

Step 6 Open Admin Screen:

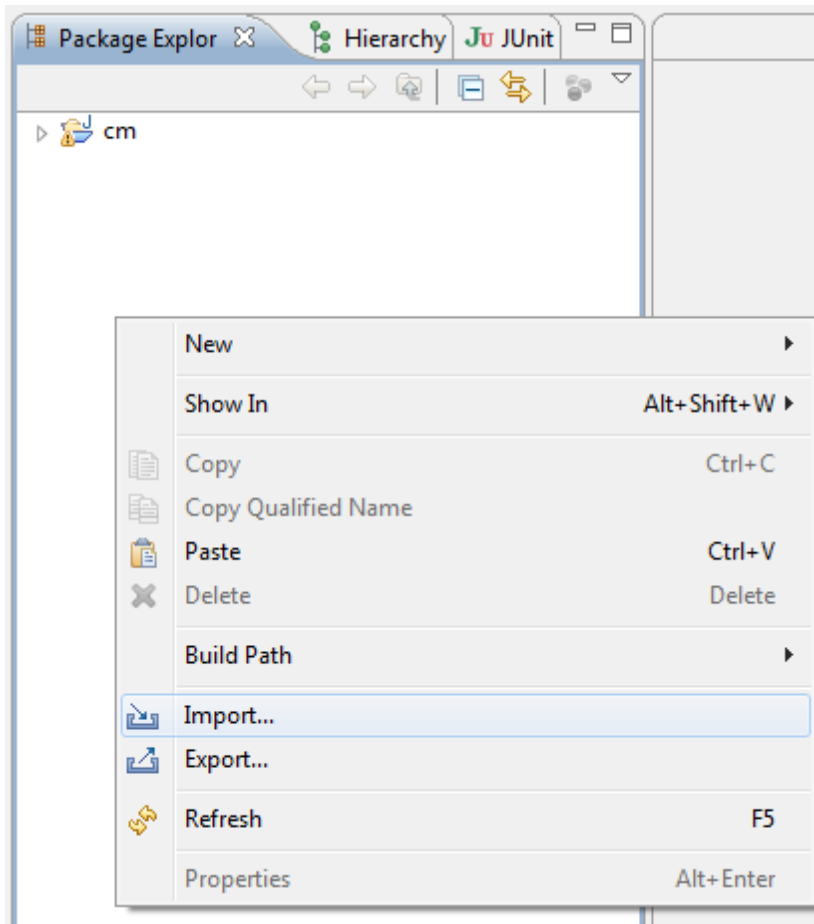
1. <http://localhost:7001/CollectionAdmin>.
2. Login using **sysuser** and **password** associated to user.

1.4.10 Importing Test Project into Customization Setup

To import Test Project into customization setup:

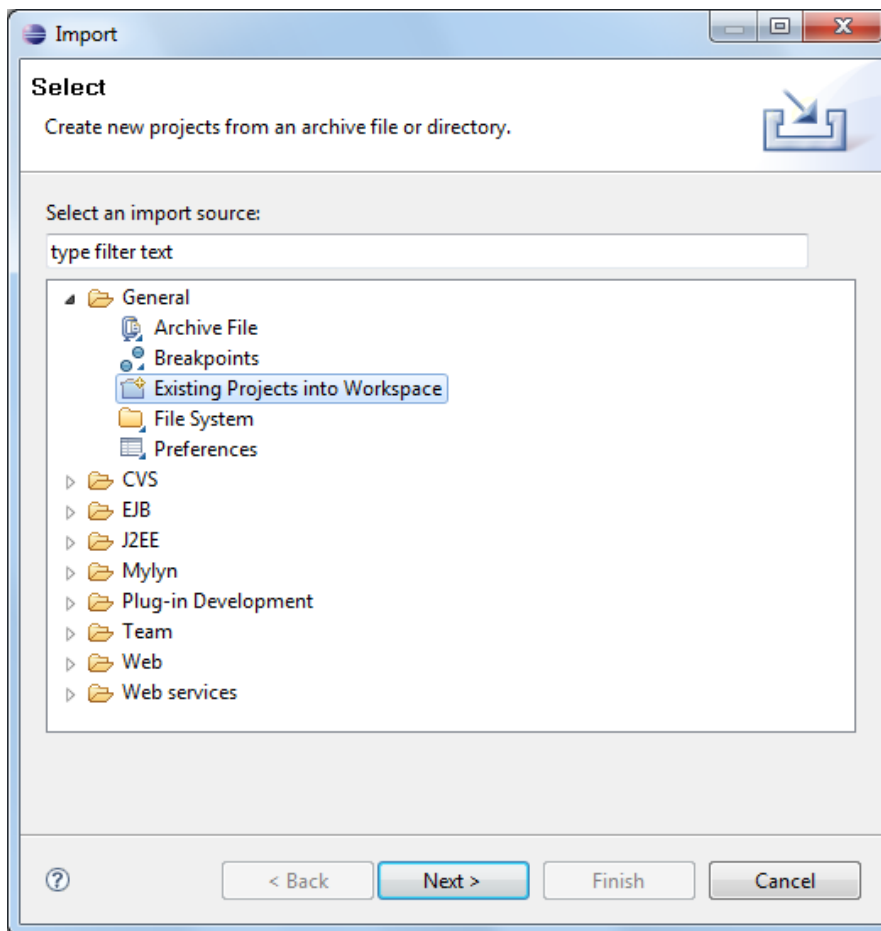
1. Right-click **Project Explorer**, and select **Import**.

Figure 1–38 Import

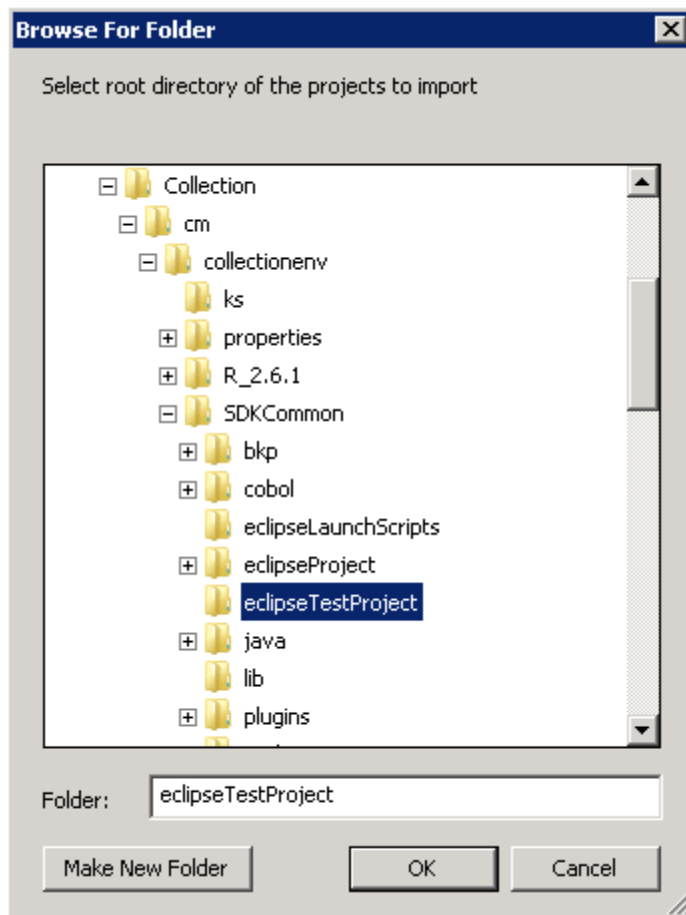


2. In the **Import** dialog box, select **Existing Projects into Workspace**.

Figure 1–39 Select Existing Projects Into Workspace

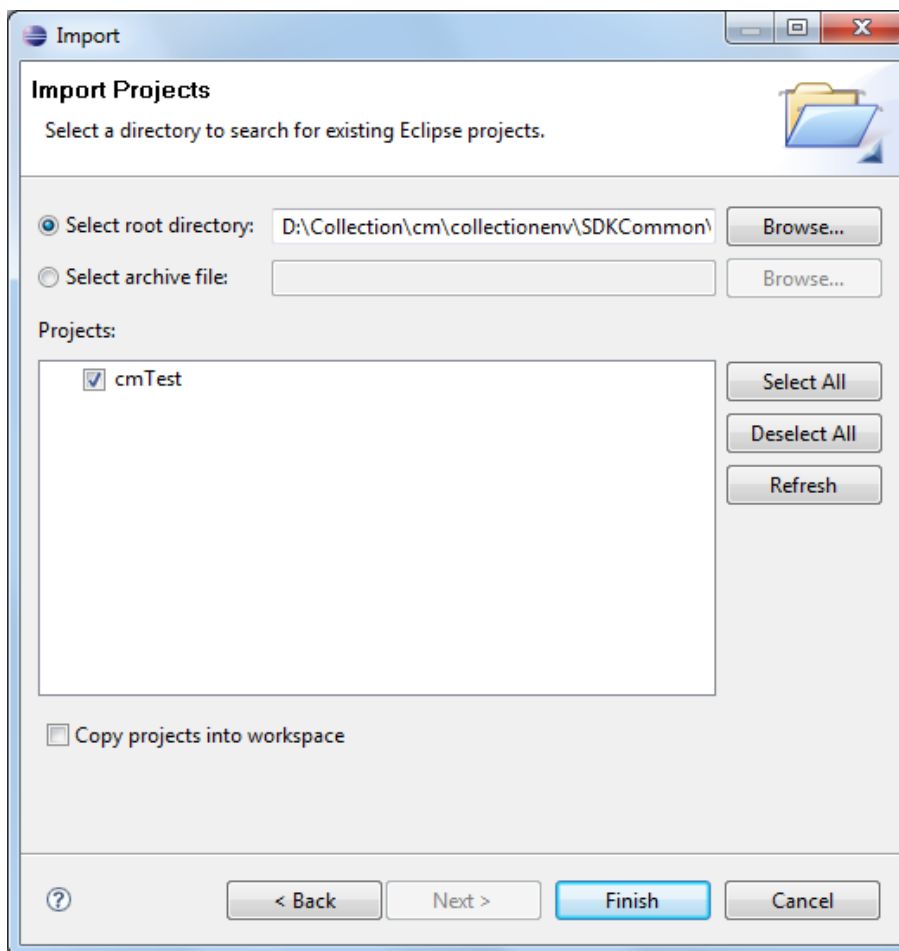


3. Click **Next**.
4. In the **Browse For Folder**, select **eclipseTestProject**.
You can locate the eclipseTestproject at:
`{Collection Environment Directory}\SDKCommon\eclipseTestProject`

Figure 1–40 Select *eclipseTestProject*

5. In the **Import Projects** dialog box, click **Finish**.

Figure 1–41 Import Projects



1.4.11 Troubleshooting JUnit

During execution of JUnit, following possible error scenarios are encountered:

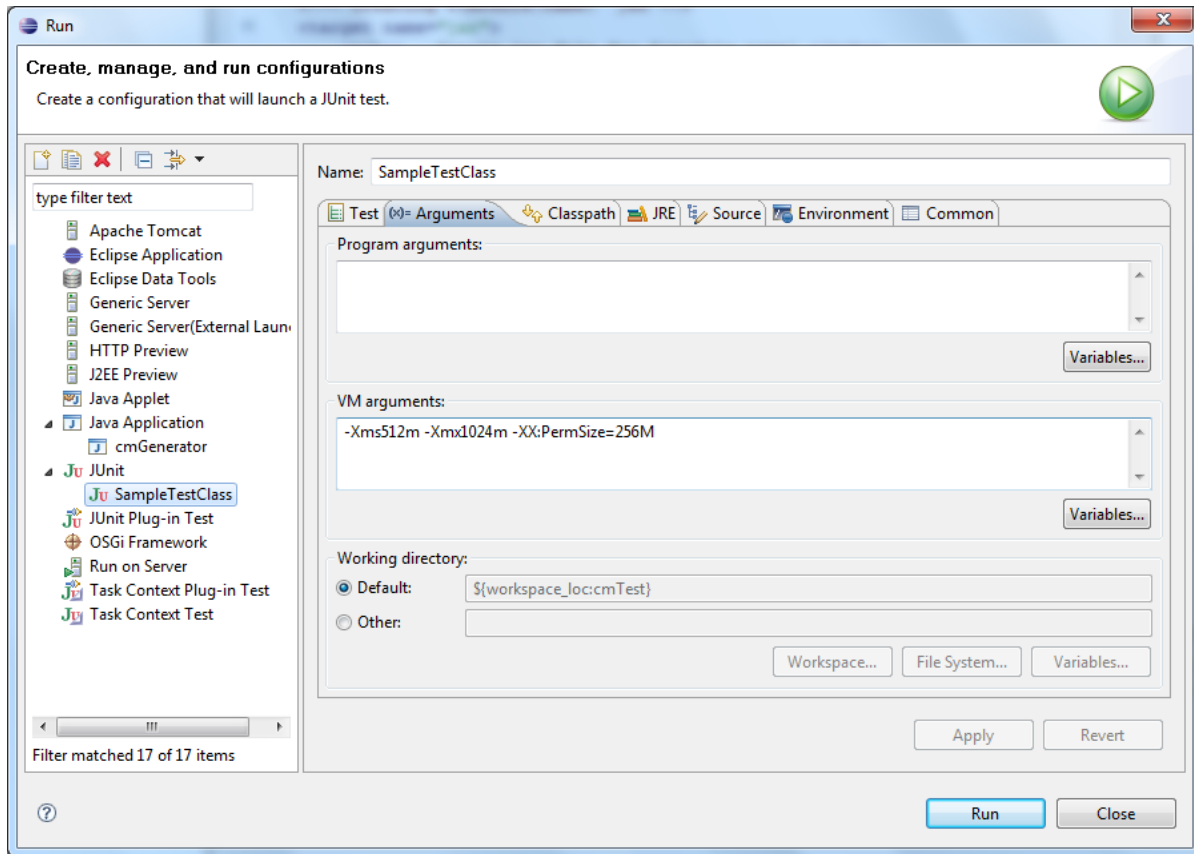
- Out of memory issue

To avoid these scenarios, the following settings need to be performed:

Out of Memory Issue

To address the Out of memory issue, set the VM arguments to **-Xms512m -Xmx1024m -XX:PermSize=256M**.

Figure 1–42 VM Arguments



Note

For running JUnit, ensure that you are using 64 bit JDK.
